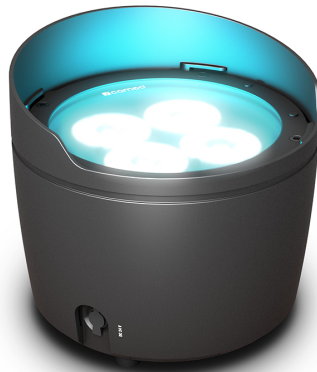




# Drop B4

Drop Series



#CLDROPB4

Flexibility meets design! Professionals and rental firms are better prepared with this battery-powered PAR! Whether they're standing, hanging or mounted in some other way, our DROP series uplights always look good. This is thanks to their intelligently attached bracket with no visible screws. The innovative bracket is screwed onto the uplight from below and not from the side as is standard. When unmounted, the lamp boasts a very clean, simple exterior. Mounting options are flexible, either on the bracket or standing on rubber feet. When positioned upright and standing (without the mounted bracket), a built-in adjustment screw is available for tilt manipulation. Rated with protection class IP65, this uplight is also suitable for outdoor use. The long-life battery also ensures reliable operation.

## Technical Informations

### Product type

Battery powered LED outdoor lighting

### Type

Battery-powered, Outdoor PAR, PAR

### Colour spectrum

RGBWA + UV

**Number of LEDs**

4

**Dispersion**

(Filter 1) 32 °, (Filter 2) 45 °, 22 °

**DMX mode**

2 x 13-channel, 20-channel, 3-channel, 4-channel, 6-channel, 7-channel

**DMX Functions**

CCT, colour change, colour fade, colour macro, Dimmer, Dimmer Curve, Dimmer Fine, Dimmer Response, DMX Delay, RGBWA + UV, strobe

**Standalone modes**

Auto programs, colour macro, Colour Mix, strobe, Tunable White, User Colours

**Control**

IR Remote Control, W-DMX

**Controls**

Down, Enter, Mode, Up

**Indicators**

OLED Display

**Operating voltage**

100 V AC – 240 V AC, 50 – 60 Hz



**Power consumption**

75 W

**Power connector**

External Power Supply

**Housing material**

Metal

**Cabinet colour**

Black

**Protection class IP**

IP65

**Cooling**

Convection

**Illuminance**

6750 lx @ 1 m

**Luminous flux**

1400 lm

**Maximum Ambient  
Temperature**

0 – 40 °C

**Relative Humidity**

< 85 %, not condensing

**Certifications**

CE, ETL, FCC, RoHS

**Accessories  
(included)**

1 x Mounting bracket, 2 x filter, IR Remote Control

**Dimensions****Width**

240 mm

**Height**

142,5 mm

**Depth**

162,5 mm

**Weight**

3,1 kg