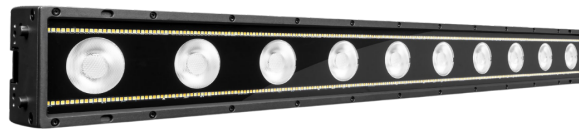




Tambora Glare

Tambora



#

Immersive powerful effects for your creativity Lighting design is about atmosphere, emotion, and storytelling. Tambora Glare is the new powerful hybrid bar that combines intense brightness, precise color mixing, and stunning motion graphics. With single-pixel mapping, each LED is individually controllable, while its high-output blinder effect enhances any show. Lightweight, modular, and perfect for both indoor and outdoor use, Tambora Glare merges vintage soul with modern technology! Dive into what sets Tambora Glare apart **Multi-Functional Hybrid Bar**: With two strobe lines, each featuring 25 segments of WW/CW LEDs, Tambora Glare creates electrifying rhythmic pulses for high-energy shows. Its 10 x 50W RGBA LEDs provide rich, warm hues with precise color mixing, while red-shift technology mimics tungsten glow for stunning dimming effects. **Precision Control & Seamless Integration**: Single-pixel mapping ensures precise, dynamic visuals, while Advanced Layer Management lets you blend colors, built-in macros, and external video content. Easily configure it in horizontal or vertical arrays using modular accessories and magnetic filters like frost and neutral density. It can be combined with Tambora Stormy Linear for a family-feeling visual impact. **Built for Any Environment**: Designed for indoor and outdoor use, its IP66-rated housing withstands dust and water. The lightweight, modular design (less than 14kg) allows easy setup and transport, with a built-in lock system for secure mounting. **Flawless Performance, Any Venue**: Tambora Glare guarantees seamless pixel spacing, smooth transitions, and bold, high-visibility effects—even in large venues or on camera. Whether for TV, touring, or EDM, it delivers your desired performance. Contact us to experience Tambora Glare in action!

Specifications

- **Light Source**
Blinder Engine: 10 x 50W RGBA LEDs
(Single Pixel control) Strobe Engine: 2 (lines)
x 125CW+125WW x1W LEDs for each line
- **Zoom range**



22° beam (RGBA LEDs) 120° beam
(WW/CW LEDs)

- **Effects**
Advanced Layer Management; Single Pixel Mapping;

Light Source Type

Source type

- RGBA LEDs 10x50W (Blinder Engine)
- 2 (Lines) x 125CW+125WW x1W Leds for each line (Strobe Engine)

Color Temperature

2500K – 8000K

LED life expectancy

50.000 Hrs L70*

*It may vary depending on various factors, as type of use and environment

Photometric Data

Aperture

- RGBA LEDs: 22°
- CW and WW LED strobe: 120°

Lumen output

19.874 Lumen output (integrating sphere)

Optical system

High efficiency

Noise Level

Fixed presets

- Silent mode: 32.0 dB
- Theatre mode: 32.2 dB
- Constant mode: 38.3 dB
- Auto mode: 38.2 dB



Control and Connections

Personalities

- Main engine: 19 / 41 / 52 control channels
- Pixel engine: 40 control channels
- Strobe engine: 50 / 50 / 50 / 100 control channels

Protocols

DMX, Art-Net, RDM, sACN

Connectors

- Locking 5 pin XLR IN/THRU
- RJ45 IN /OUT

Power connector

PowerCon True1 IN/OUT

Web Server

Built In

CloudIO

Fully compatible

Dynamic Effects

Colours

- 10 pcs 4-in-1 RGBA LEDs
- 500 pcs Cold+Warm white LEDs split into 50 areas
- Advanced layers management (color, internal shape, pixel mapping + strobe)
- White CT emulation 2500 – 8000 K
- RGBA and strobe shape effect
- Red shift

Frost

- Neutral Density filter (Optional)
- White filter 60° (Optional)



Dimmer/Shutter

- High resolution electronic dimmer, 24 bit, 5 curves
- Electronic strobe 0,3 to 25 f/sec

Hardware and Software

- Long life self-charging battery
- Display Graphic LCD backlit b/w Display
- Firmware upload from another fixture
- Firmware Upgrade via Web Server
- Diagnostic
- DMX monitoring
- Remote access through RDM

Housing

- Magnesium structure
- One side handles for transportation
- IP66 protection rate
- Built-in mechanical horizontal alignment system
- Working in any position
- Accessories for vertical alignment (optional)
- Optional safety chain (optional)

Electrical

Operating Voltage

100-240V, 50/60 Hz

Power Supply

Electronic auto range with active PFC

MAX power consumption

Max 480W @100V 4,8A

Thermal Specification

Max ambient temperature

45°C (113°F)

Min ambient temperature

-20°C (-4°F)



Safety Specs

Max temperature of the external surface

90°C (194°F)

Minimum distance of illuminated objects

0.2 m (8")

Minimum distance from flammable materials

0.2 meters (8")

Protections

- Thermally protected power supply (overheating and cooling failure)
- Forced ventilation with axial fans
- T10A 50V 5x20 mm – External mains fuse
- T6.3A 250V 5x20mm – External fuse

Compliance

CE Marking (in conformity to the following)

- 2014/35/EU – Safety of electrical equipment supplied at low voltage (LVD)
- 2014/30/EU – Electromagnetic compatibility (EMC)
- 2011/65/EU – Restriction of the use of certain hazardous substances (RoHS)
- 2009/125/EC – EcoDesign requirements for Energy-related Products (ErP)

UKCA conforms to UK regulations

- S.I. 2016 N. 1101
- S.I. 2016 N. 1091
- S.I. 2012 N. 3032
- S.I. 2021 N. 745

cMETus Listed

- UL 1573:2003
- CSA C22.2 N.166: 2015



Packaging

Carton box + polystyrene

Carton box + Foam shell

Flight case + Foam shell

Weight - Size

Weight

13.5 Kg (29.76 lbs)

Base dimensions

- 1000 x 198 x 106 mm
- 39.4 x 7.79 x 4.2 in

Accessories

Omega bracket A

445006/801 (Included)

Adjust. Bracket

445005/801 (Included)

Handle bracket

VOL011/001 (Included) x2

ETL Power

CAB02B/802 (Included)*

* Cord 1.5 m (bare end with IP65 PowerConTrue1 conn.)

Flight case (4 pos.)

CF1037F (Optional)

Clear side for strobe frost filters (Optional)

- Transparent 10°: CA2005000102
- Transparent 20°: CA2006000102
- Transparent 30°: CA2007000102



- Middle black: CA2008000102

**Interchangeable with
T. Glare frost filters
(Optional)**

- 10°: CA2009000102
- 20°: CA2010000102
- 30°: CA2011000102
- Black: CA2012000102

**Base plate + hang
adapter**

CA2013000102 (Optional)

Stand plate

A2014000102 (Optional)

Hang adapter

CA2015000102 (Optional)

**Square base plate +
hang adapter**

CA2016000102 (Optional)

Square base plate

CA2017000102 (Optional)

**Floor stander
assembly**

CA3078000102 (Optional)

**Reinforced
assembly**

CA3079000102 (Optional)

**Parallel con. bracket
ass.**

CA3080000102 (Optional)



**Vertical bracket
assembly**

CA3081000102 (Optional)

Safety chain

105041/003 (Optional)

Clamp

C21070 (Optional)

Omega bracket

183102/805 (Optional)
