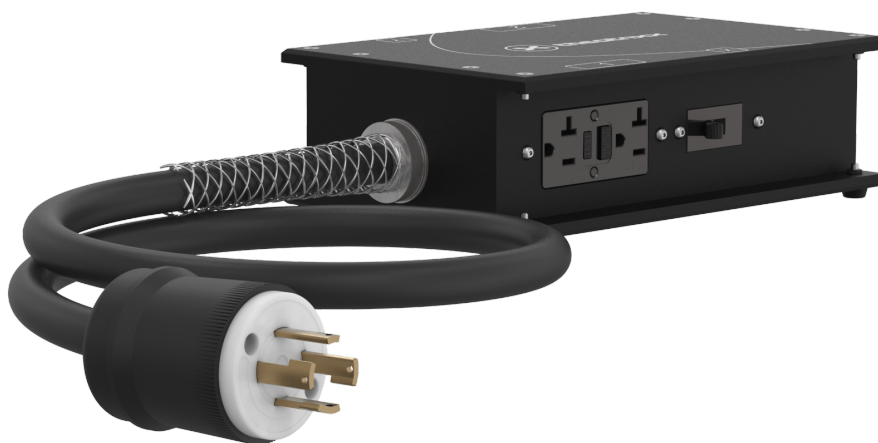




# SB-322T-GFCI

Theatrinx



## #SB-322T-GFCI

The Theatrinx Stage Box Series was developed to fulfill the needs of temporary power distribution and stage power. The compact size of the robust enclosure and its reduced height allows it to be installed with minimal interference. The top and bottom panel are cut from a solid 1/8" aluminum sheet and are fixed to a robust and is fixed to a robust 0.08" extruded aluminum channel system. This design allows to protect the breakers and connections from surrounding elements. This product can also be adapted for other types of applications. It can be used in conjunction with any standard or custom-built distro.

### Input

#### Connector

L14-30P – 1004SJ00W – 3'

### Thru

#### Connector

L14-30 Flanged Outlet

### Outputs

#### Connectors

2 X GFCI 5-20 Duplex

#### Breakers



2 X 20A 120V Circuits

## Features

### Enclosure construction

Robust aluminum housing

## Dimensions

### Height

76.2 mm (3.00")

### Depth

198.65 mm (7.82")

### Width

152.4 mm (6.00")

---

## Certifications



DESIGNED & MANUFACTURED  
IN CANADA 