

Aquilon RS3

Ref. AQL-RS3



Mission-critical 4K/8K multi-screen presentation system and videowall processor with 24 inputs and 12 outputs, delivering uncompromising presentation experiences to high-end staging and premium system integration



Outstanding Performances

Like all the products of the **LivePremier™** series, **Aquilon RS3** offers versatile 4K digital connectivity, unmatched real-time 10/12-bit 4:4:4 video processing power, best-in-class image quality and pure 4K60p on each input and output with ultra-low latency. Ideally tailored to large scale auditoriums, conference rooms, staging live events, houses of worships, corporate lobbies and sports venues, **Aquilon RS3** offers almost unlimited possibilities for future applications and possesses enough bandwidth to support evolving requirements, such as 8K and higher framerates.

Industrial Grade Reliability

Aquilon RS3 was specifically engineered to perform to the highest standards in mission-critical applications and road-hardened to survive frequent shipping and tough live events. By combining a heavy-duty modular design, the highest quality components selected for their proven reliability, and features such as redundant hot swappable power supplies and smart thermal management, **Aquilon RS3** delivers uninterrupted 24/7 performance and peace of mind!

Versatile for the Highest Flexibility of Configurations

Aquilon RS3's modular design allows you to easily swap I/O cards to accommodate a variety of connectivity arrangements and your match source and display requirements. **Aquilon RS3** offers 24 seamless inputs, 12 outputs configurable as single screens, edge-blended widescreens or scaled auxiliary outputs, 2 dedicated Multiviewer outputs, up to 16x 4K or 32x HD freely assignable layers, as well as powerful features that will allow you to handle any creative display configuration, such as a custom output formats, output rotation, AOI, bezel compensation and pixel pitch management.

Smart Functionalities

Aquilon RS3 features state-of-the-art real time processing features that will help you to unleash all your creative potential and produce flawless, stunning shows: true seamless switching, flying layer movement, advanced cut and fill, cutting edge keying engine... **Aquilon RS3** also allows to remove external audio de-embedding boxes: In just a few easy clicks, audio can be de-embedded from video sources, routed directly using onboard Dante™ card and re-embedded from external audio processor for sending to display, recording device, or streaming.

Best User Experience

Entirely re-imagined, the new web-based user interface is intuitive, simple, state-of-the-art and offers dozens of features you will love instantly and that make configuration and control a breeze.

24 inputs	12 outputs	4K60 4:4:4 10-12 bit	2 multi-viewers	HDR compliant	Dante	HDMI 2.0	DP 1.2	12G-SDI	HDCP 2.2
-----------	------------	----------------------	-----------------	---------------	-------	----------	--------	---------	----------

- Aquilon RS3 at a glance**
- ▶ Industrial grade reliability
 - ▶ 24x 4K60p inputs and 12x 4K60p outputs - field swappable I/O cards
 - ▶ Versatile 4K digital connectivity: HDMI2.0, DP1.2, 12G-SDI
 - ▶ Real-time 10/12-bit 4:4:4 video processing
 - ▶ 80 Megapixels throughput on Program at 10-bit 4:4:4 @60Hz
 - ▶ Up to 16x 4K60p or 32x DL/2K60p split layers (+live backgrounds)
 - ▶ HDR compliant with HDR10 and HLG
 - ▶ Intuitive HTML5-based user interface with live source thumbnails
 - ▶ Native DANTE audio networking hardware and support
 - ▶ Future proof modular design to support to 8K and 120 fps...

Aquilon Models	RS1	RS2	RS3	RS4	C	C+
4K60p inputs	16	16	24	24	up to 16	up to 24
4K60p outputs	8	12	12	16	up to 16	up to 20
Max 4K60p split layers	8	16	16	24	up to 16	up to 24
Max DL/2K60p split layers	16	32	32	48	up to 32	up to 48
Simul. 4K still image channels	12	12	24	24	up to 12	up to 24
Build-to-Order (BTO)					✓	✓
Rack units	4	4	5	5	4	5

Key Features

Based on LivePremier™ platform

Highly ruggedized chassis with cleanable air filter

Hot-swappable redundant power supplies

24x seamless 4K60p inputs (12x HDMI 2.0, 8x DP 1.2, 4x 12G-SDI)

12x 4K60p outputs (12x HDMI 2.0)

True 4K60p 4:4:4 performance on every I/O channel

Field swappable I/O cards to accommodate a variety of connectivity arrangements

Support 4K60p input and output as single, double or quad plugs

80 Megapixels throughput at 10-bit 4:4:4 on Program, without restricting Preview or Multiviewer

Up to 8x 4K60p or 16x Dual/2K60p mixing layers (up to 16x 4K60p or 32x Dual/2K60p split layers)

24x 4K or 48x 2K concurrent still images

Unscaled seamless background mixer on each output (using instantaneous still images or live sources)

Flexible layer management

Seamless crossfade on all mixing layers, on all 24 sources

Scaled 4K60p AUX feature for all non-PGM outputs

Ultra-low latency 10 and 12-bit processing

Ability to place the outputs anywhere on an almost limitless video canvas space for special LED wall applications

Advanced pixel pitch management for LED wall applications

2x configurable 4K Multiviewer outputs with 24x resizable widgets on each, including clocks, countdown and timers

HDR compliant with HDR10 and HLG

Native Dante™ audio networking hardware and support (64x64)

Rotation capability on each output; manage portrait displays

Independent output rates

Frame-lock or internal sync. generator

Web RCS: highly intuitive, lightning fast web-based user interface based on HTML5

Live video thumbnails shown on GUI

Multi operator real-time collaboration

Password protection and user privileges

Easily create and recall preset looks on all your screens and auxiliary outputs

Custom output formats for non-standard display applications

Area of Interest feature to customize active areas of outputs

Still images support variable alpha-channels for transparent background on logos

Cut and Fill (using two sources or a source and a still image)

Fully functional simulator for offline configuration and practice

EDID management on every input and output

Compliant with HDCP 2.2 and 1.4

Future proof modular design to support to 8K and HFR

Quiet: 49dB average noise at 1m when ambient temperature is less than 32°C/90°F

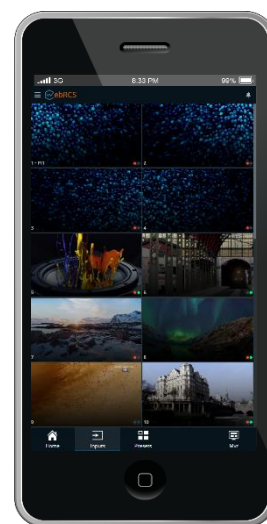
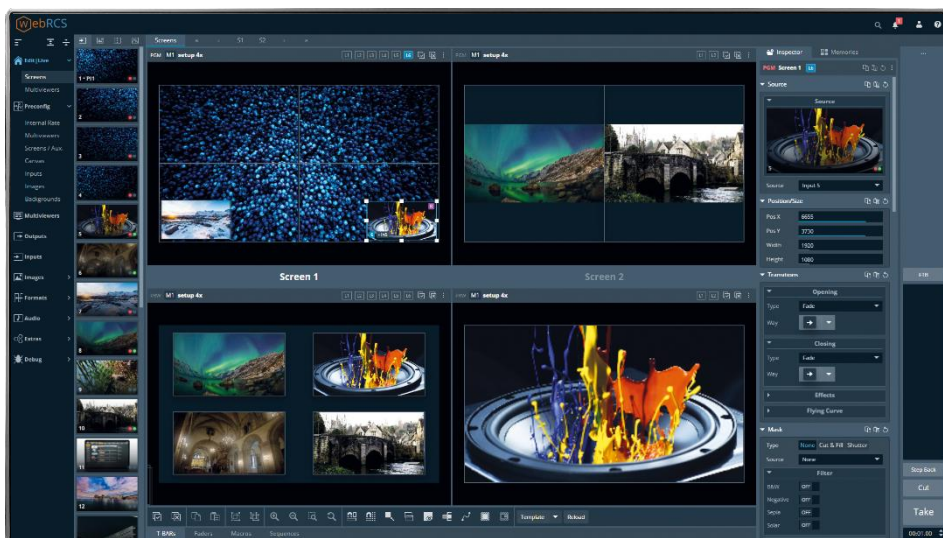
Remote services and maintenance

Backup and restore functions

Web RCS: Unrivalled Ease of Use

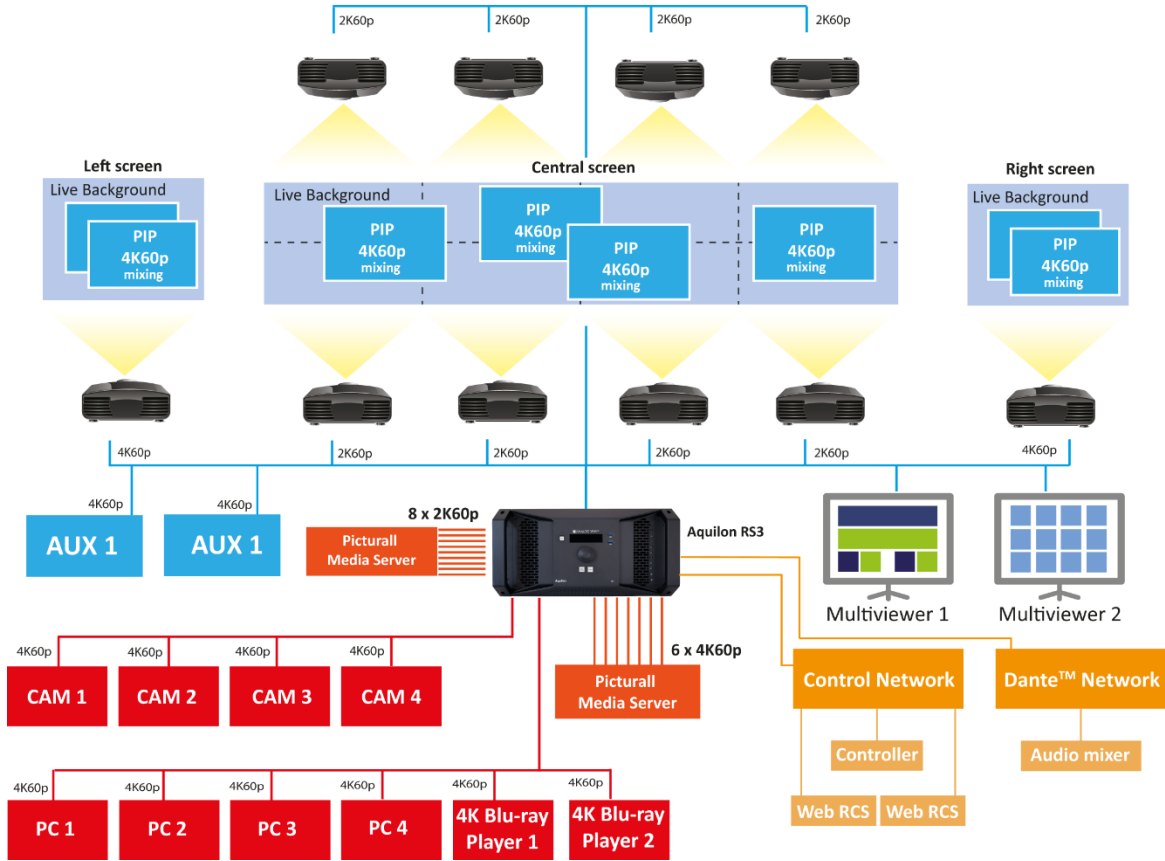
For the best ease of setup and to ensure flawless control of multi-screen presentations, the **LivePremier™** series features a totally new, cutting-edge HTML5-based user interface, the **Web RCS**, compatible with any device or platform including iOS and Android devices.

Conceived to greatly increase productivity and reduce learning curve, the **Web RCS** offers dozens of unique features that simplify configuring and operating, such as live program/preview workspaces with high-resolution dynamic thumbnails of connected sources, multi-operator collaboration with password protection and user privileges, walkthrough guides, keyword search, multi-language support and much more...

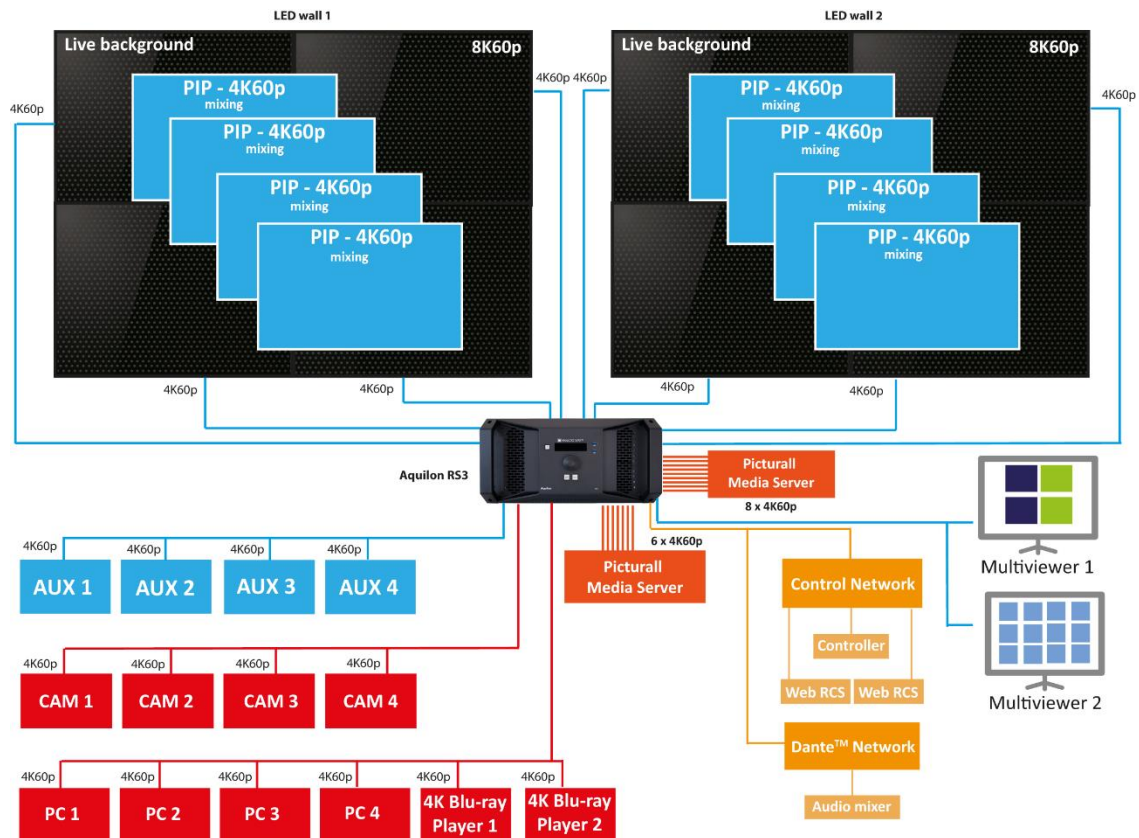


The Web RCS is compatible with any device or platform, including iOS and Android devices

Aqilon RS3 can drive a widescreen with 8x 2K60p outputs, Left/Right 4K60p screens and 2x 4K60p AUX outputs



Aqilon RS3 can drive 2x 8K60p LED walls and 4x 4K60p AUX outputs



Technical Specifications

INPUTS

- 24 seamless 4K60p inputs via 6 field swappable input cards:
 - 12x HDMI 2.0 (up to 4K60p 8-bit 4:4:4 or up to 4K60p 12-bit 4:2:2 or up to 4K30p 12-bit 4:4:4)
- 8x DisplayPort 1.2 (up to 4K60p 10-bit 4:4:4 or up to 4K60p 12-bit 4:2:2)
- 4x 12G-SDI (up to 4K60p 10-bit 4:2:2) - compatible with 3G-SDI and 6G-SDI
- Support 4K60p input as single, double or quad plugs
- Support custom input formats such as 8192x1080@60p or 1080x8192@60p (aka "8k x 1k") on a single connector
- Connector status LEDs for easy troubleshooting

OUTPUTS

- 12 active 4K60p outputs via 3 field swappable output cards:
 - 12x HDMI 2.0 (up to 4K60p 8-bit 4:4:4 or up to 4K60p 12-bit 4:2:2 or up to 4K30p 12-bit 4:4:4)
- Support 4K60p output as single, double or quad plugs
- Support custom output formats such as 8192x1080@60p or 1080x8192@60p (aka "8k x 1k") on a single connector
- Connector status LEDs for easy troubleshooting

MULTIVIEWER OUTPUTS

- 2 dedicated HDMI 2.0 outputs configurable as up to 2x 4K30p or up to 2x 2560x1440@60p or 1x 4K60p
- 24 resizable widgets on each output
- Customizable layouts with 50 memories
- Monitor inputs, still images and screens (Program and Preview)
- Built-in clocks, countdown and timers

LAYERS & BACKGROUND

- Supports mixing layers (true seamless transitions) and split layers (cut transitions)
- 8x 4K60p or 16x Dual/2K60p mixing layers per system (16x 4K60p or 32x Dual/2K60p split layers)
- Layer source can be a live input, a still image or a screen
- Each output has an unscaled background mixer supporting seamless transitions - background source can be still image or live source

SCREENS

- Outputs configurable as single screens or edge-blended widescreens
- Up to 12x Dual/2K60p program outputs or up to 8x 4K60p program outputs
- Ability to place the outputs anywhere on an almost limitless video canvas space for special LED wall applications
- Flexible layer management: each screen gets dedicated layers of various sizes (2K, 4K, ...) using common-pool layer resources
- 1000 user definable screen presets and 500 master presets

SCALED AUX OUTPUTS

- Any unused output configurable as a scaled auxiliary output
- Up to 12x 4K60p scaled auxiliary outputs
- Can display any input or screen (1:1 or scaled)

AUDIO

- Audio de-embedding/embedding on every input & output (raw audio)
- De-embed audio from sources and route directly to Dante™ network
- Re-embed audio from external audio processor for sending to display 64x64 Dante™ channels @48 kHz or 32x32 Dante™ channels @96 kHz
- Dual redundancy Ethernet ports - AES67 support

PROCESSING

- Based on Analog Way exclusive 5th generation scaling engine
- Extremely low latency, as low as 1 frame in proper configuration
- Motion compensation deinterlacing
- BT.601; BT.709; BT.2020; BT.2100 color spaces
- Advanced pixel pitch management & bezel compensation
- HDR compliant with HDR10 and HLG
- Compatible with HDCP 1.4 and 2.2

TRANSITIONS & EFFECTS

- True A/B Mix
- Misc. layer border effects/colors and separate shadow
- Transitions: Cut, Fade, Slide, Wipe, Circle, Stretch, Depth, Flying layer movement with programmable paths
- Layer effects: Background Cut, Transparency, Luma/Chroma Key, DSK, H&V Flip, Cut and Fill
- Colors effects: B&W, Negative, Sepia and Solarize

STILL IMAGES

- 24x 4K or 48x 2K concurrent still images - fully resizable
- Still images support alpha-channel
- Still image library with 100 memories
- Multi-file download/upload via Web RCS
- Capture from live inputs

CONTROL

- Web RCS: On-board intuitive web-based user interface
- Shot Box²/Control Box²: Cost effective control solutions
- New controller (end 2019)
- Simple REST API (HTTP & TCP)
- Advanced TCP protocol based on JSON
- AMX/Crestron drivers
- AW VideoCompositor: Premium drag & drop Crestron® GUI

OTHER FEATURES

- Tally/GPI-O
- Dedicated BNC with loop out for Framelock, blackburst and tri-level sync
- Fully functional simulator for offline configuration and practice (end 2019)

EXPANDABILITY

- Expansion via simple linking possible (future hardware upgrade)

Dimension (in Rack Units - RU)

- ▶ 5RU

Dimensions (without rack ears & rack mount)

- ▶ W 17.28" x H 8.7" x D 28.03"
- ▶ L 439.8 mm x H 221.2 mm x P 712.5 mm

Dimensions (with handles)

- ▶ W 18.89" x H 8.7" x D 28.03"
- ▶ L 482.4 mm x H 221.2 mm x P 712.5 mm

Weight without accessories

- ▶ 35.3 kg / 77.16 lbs

Operating conditions

- ▶ Temperature: 0 to 40°C (32 to 104°F)
- ▶ Humidity: 10% to 80%, non-condensing

Warranty


- 3-year warranty on parts and labor back to factory

Safety Compliance

- ▶ IEC/UL/EN 62368-1, CSA22.2 #62368-1

Supplied with

- ▶ 3x Power supply cord
- ▶ 1x Web-based Remote Control Software
- ▶ 1x Rackmount kit
- ▶ 1x Ethernet cross cable
- ▶ 3x MCO 5 pin connectors
- ▶ 1x User manual (PDF)*
- ▶ 1x Quick start guide including safety instructions*

 Specifications subject to change without prior notice

AQL-RS3_EN-02/22/2019